



Chiswick High Road, London, W4  
Guide Price £1,049,950

**WHITMAN & CO.**  
SALES · LETTINGS · COMMERCIAL



A fantastic penthouse apartment with far-reaching views in this boutique development, which is moments from Chiswick High Road's numerous shops, cafes and restaurants. Offering over 1100 sqft, the flat comprises a fabulous 28'5 open plan kitchen/reception room with separate dining area and a huge amount of light from the floor to ceiling windows, a spacious roof terrace with far reaching views over the Gunnersbury Triangle nature reserve, primary bedroom suite with luxury ensuite shower room and extensive fitted wardrobes, a second double bedroom with fitted wardrobes, main shower room, entrance hall with storage cupboard, allocated off street parking space and lift access. Transport links include Chiswick Park and Gunnersbury Stations, local bus routes and the A4/M4 for routes in and out of London. In addition to the High Road's extensive facilities, the apartment is close to several local parks and Strand on the Green's picturesque riverside. No onward chain.



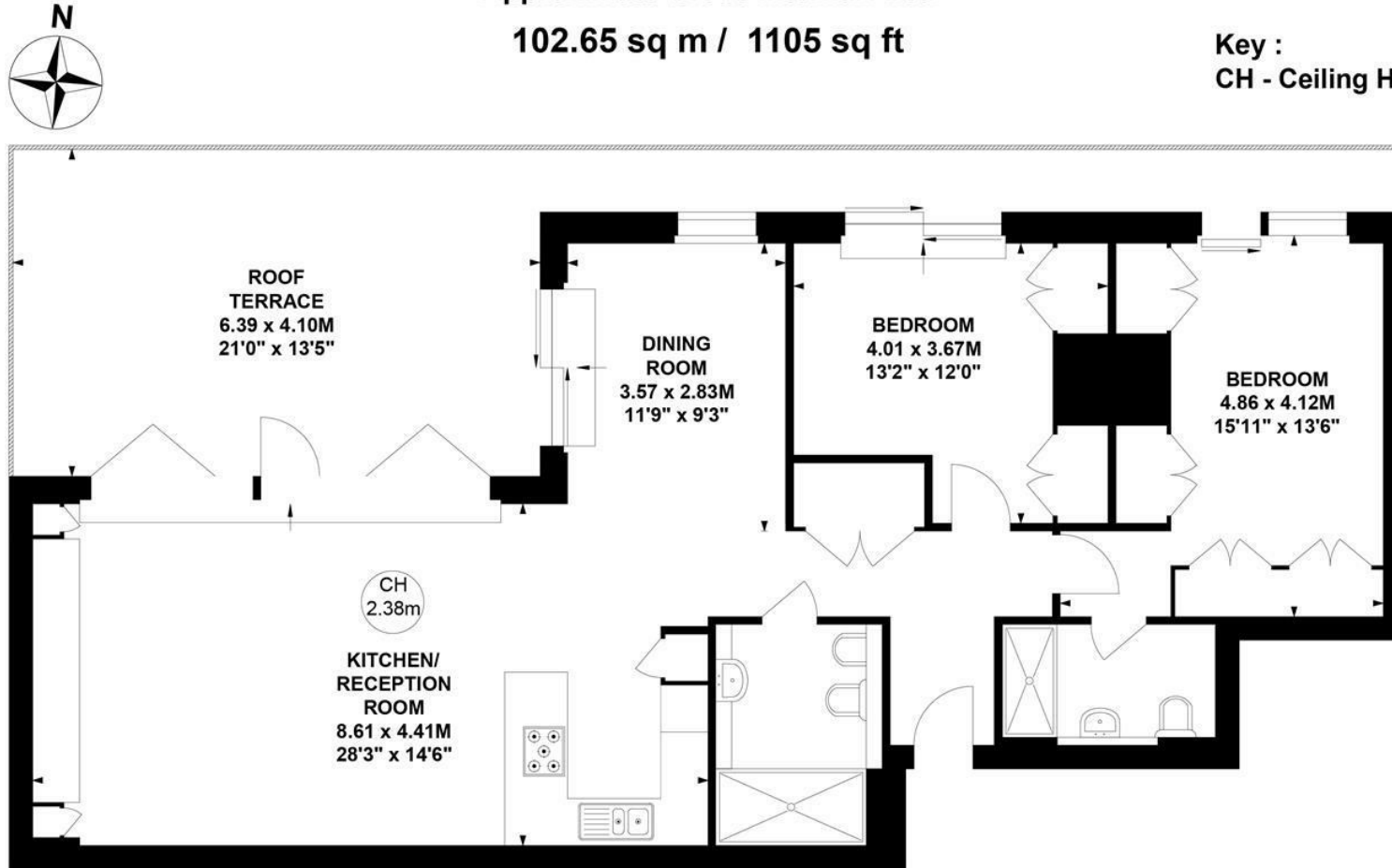
# Chiswick High Road, W4

Approximate Gross Internal Area

102.65 sq m / 1105 sq ft

Key :

CH - Ceiling Height



## Fifth Floor

Not to scale, for guidance only and must not be relied upon as a statement of fact.

All measurements and areas are approximate only

- Penthouse apartment with far-reaching views
- Large roof terrace
- Close to numerous amenities

- 28'5 Open plan kitchen/reception room
- Off street parking
- No onward chain

Tenure - Leasehold

Lease Length - 109 Years remaining

Ground rent - £836.74 pa

Service Charge - £4361.59 pa

Local Authority - Hounslow

Council Tax - Band F

